



Installing the Printer to Your Wireless Network

imagePROGRAF PRO - 1000

Mac OS

Setup and Installation

Setup and Installation

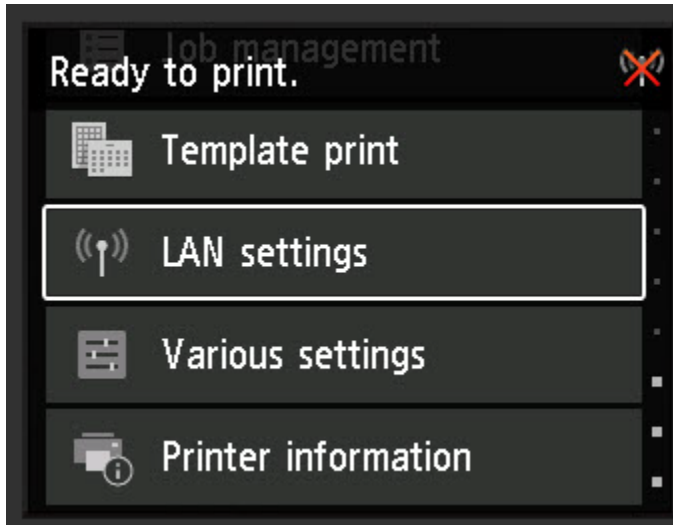
The instructions contained in this document apply equally to first-time installations, adding the printer to additional computers in the Wireless Network and for re-installations after a Router or Network change.

To use the machine wirelessly with a computer, the printer must be connected to the Wireless LAN and software including the drivers needs to be copied (installed) to the computer's hard disk. Installation time varies depending on the computer environment or the number of application software to be installed.

IMPORTANT

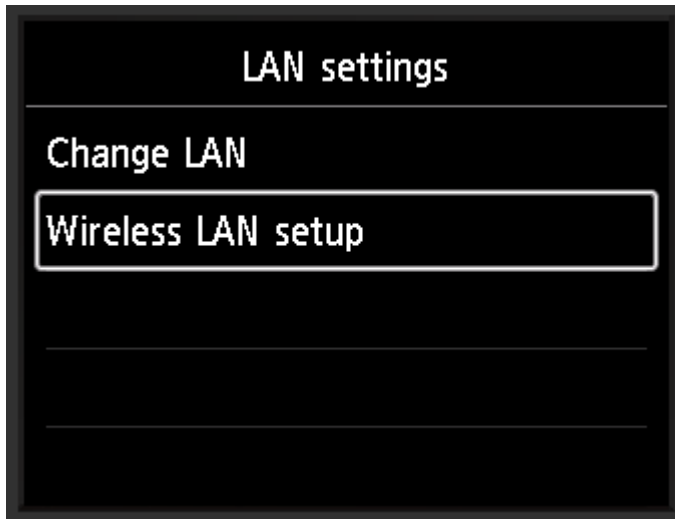
- Log on as the administrator (or a member of the Administrators group).
- Quit all running applications before software installation.
- Do not switch users during the installation process.
- Internet connection may be required during the installation. Connection fees may apply. Consult the internet service provider.
- It may be necessary to restart your computer during the installation process. Follow the on-screen instructions.
. The installation resumes once your computer has restarted.
- If the firewall function of your security software is turned on, a warning message may appear that Canon software is attempting to access the network. If such a warning message appears, set the security software to always allow access.

Connecting to the Wireless LAN



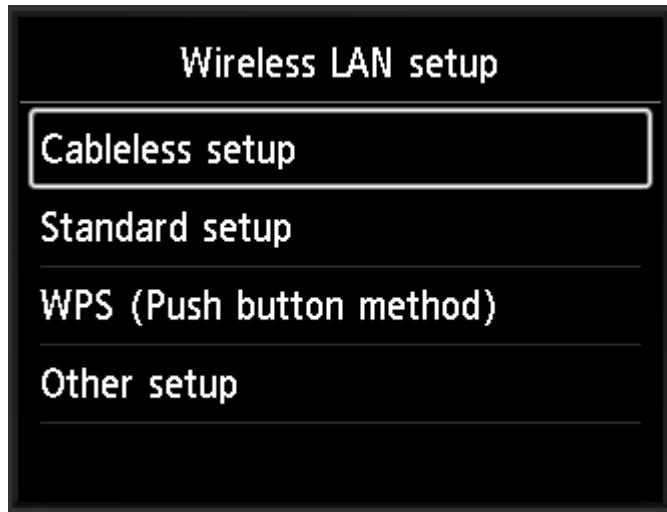
1. From the **Home** screen, press the up or down arrows until **LAN settings** appears. Then press the **OK** button.

Connecting to the Wireless LAN



2. Use the down arrow to select **Wireless LAN setup** and press the **OK** button.

Connecting to the Wireless LAN



3. Use the arrows to select **Cableless setup** and press the **OK** button.

Connecting to the Wireless LAN



4. Press the **OK** button when this message appears.

Connecting to the Wireless LAN



Follow the instructions on the computer or smartphone, etc. to perform the operation.

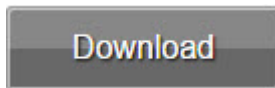
5. When this screen appears, the printer is waiting to receive the information on the wireless network. Go to the computer.

Connecting to the Wireless LAN

Software Setup

The setup program needs to be downloaded and installed to your computer in order to enable your printer to be used wirelessly from your Mac computer.

Click **Download** to start setup. This needs to be done on the computer to which you want to connect the printer.

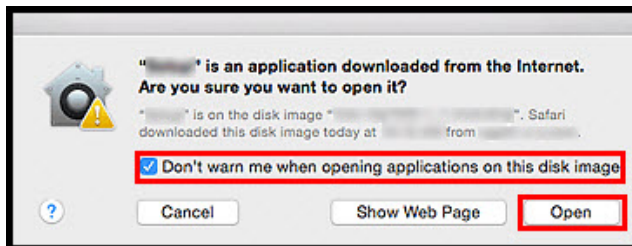


If setup does not start automatically, double-click the downloaded **.dmg** file.

Follow the on-screen instructions to complete setup.

A number of warning messages may appear during installation. Check each message, and then click **Open** or

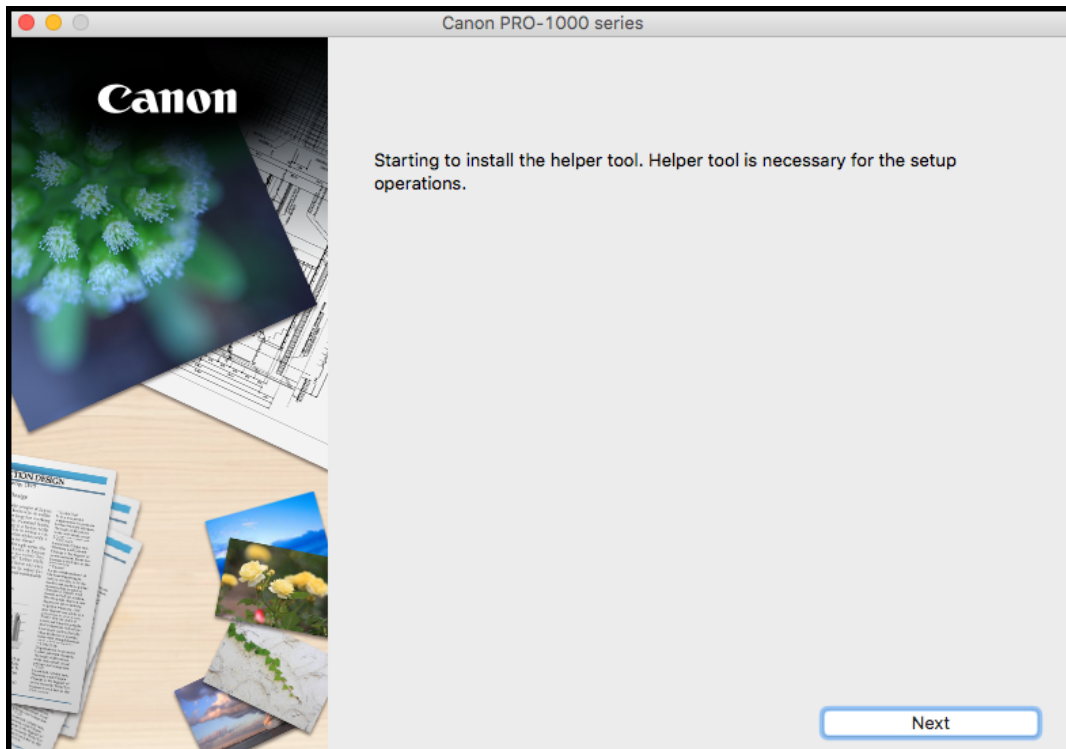
Always Allow.



When the **Don't warn me when opening applications on this disk image** option is available, select it to prevent further warnings from appearing.

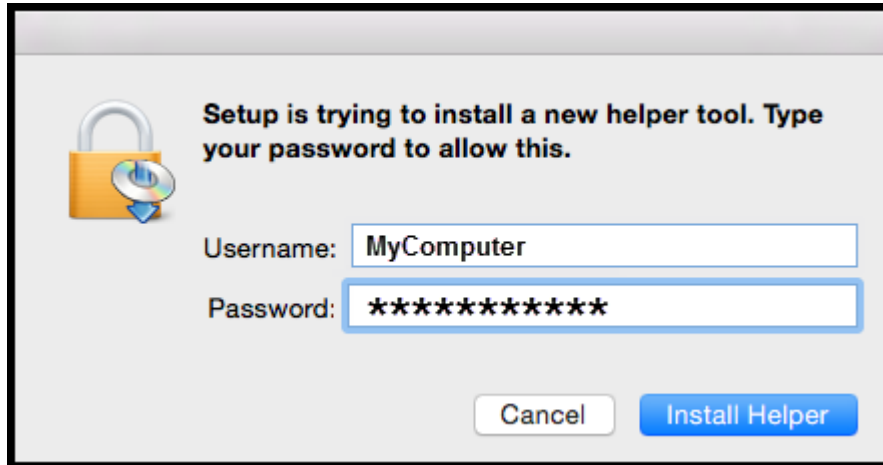
Connecting to the Wireless LAN

Click **Next** on the initial screen.



Connecting to the Wireless LAN

Enter your Password and click **Install Helper**.



Setup is trying to install a new helper tool. Type your password to allow this.

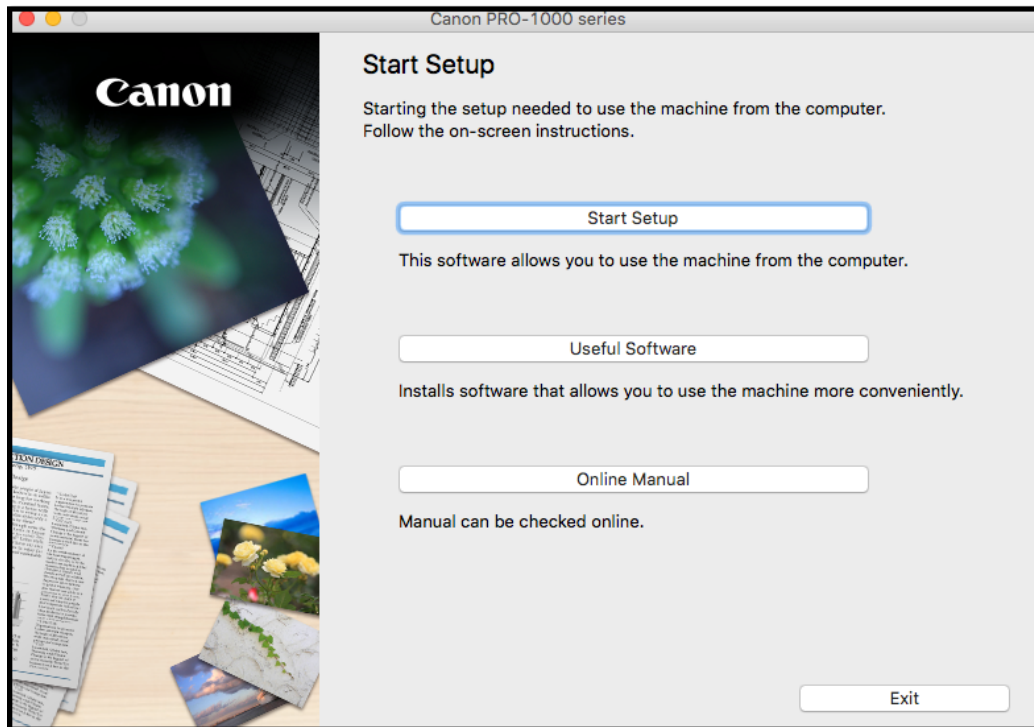
Username: MyComputer

Password: *****

Cancel Install Helper

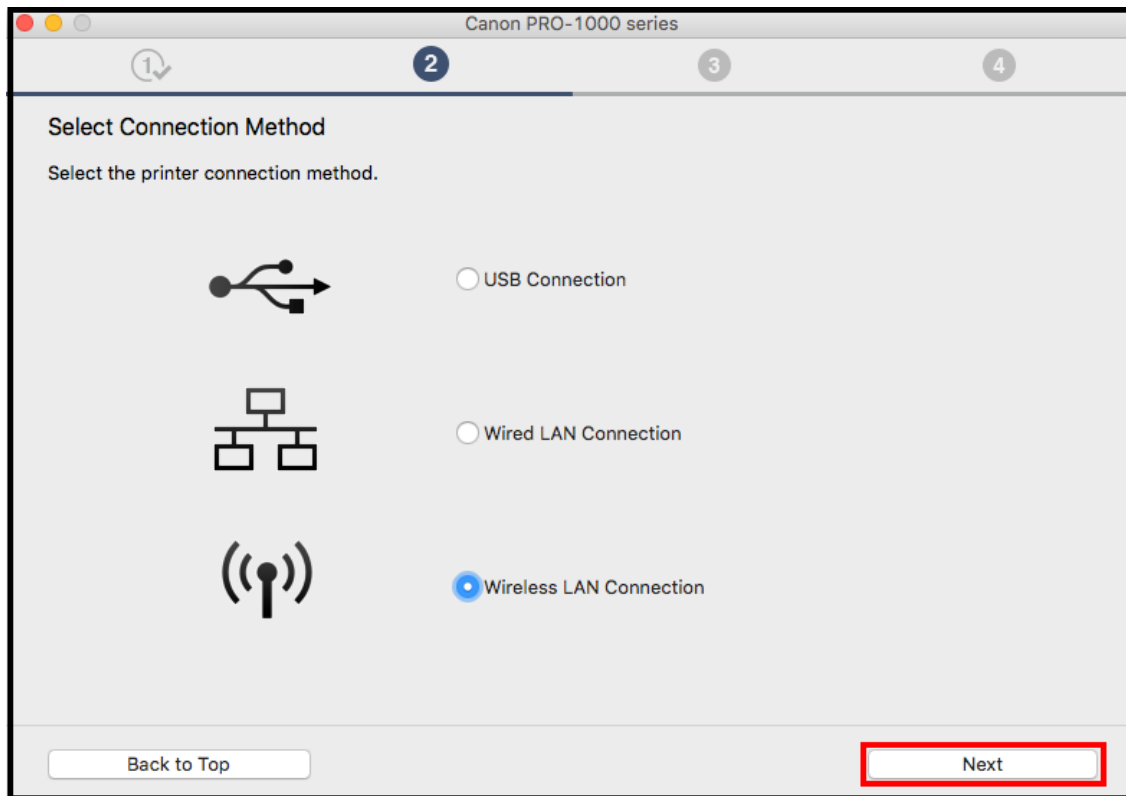
Connecting to the Wireless LAN

Click **Start Setup**.



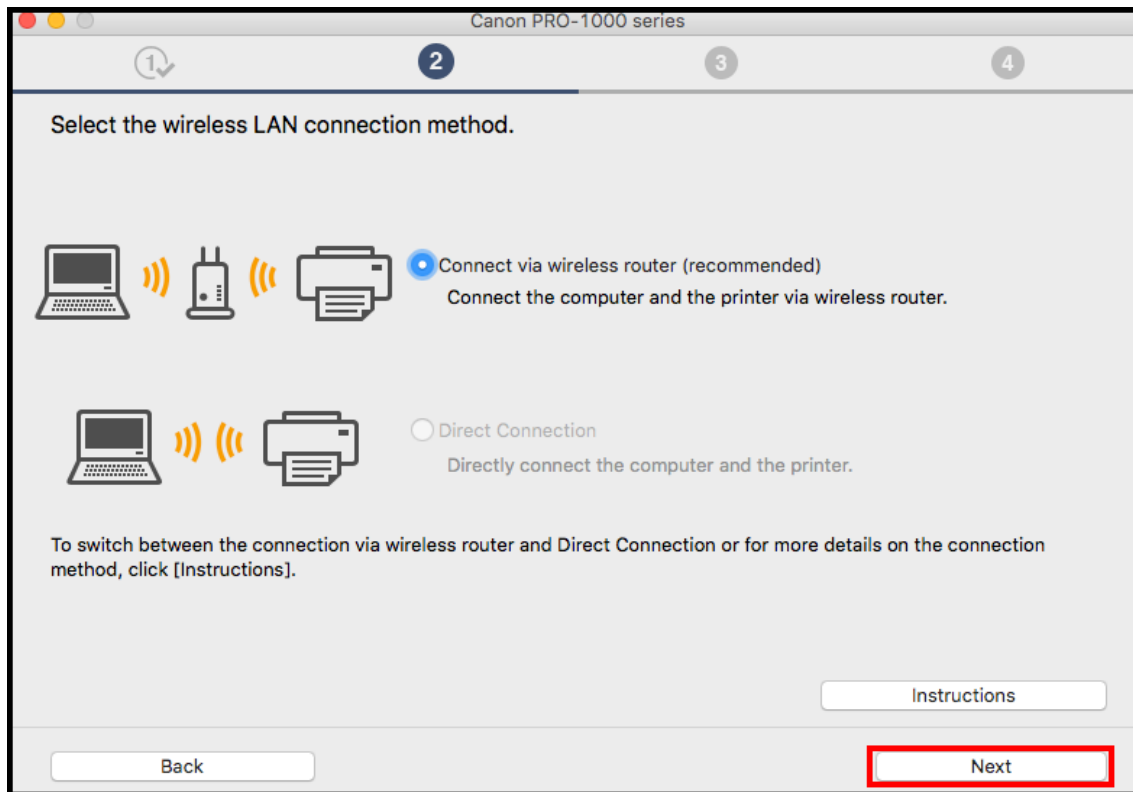
Connecting to the Wireless LAN

Continue following on-screen instructions to select country, License Agreement, etc. until the **Select Connection Method** screen appears. Be sure to select **Wireless LAN Connection**, then click **Next**.



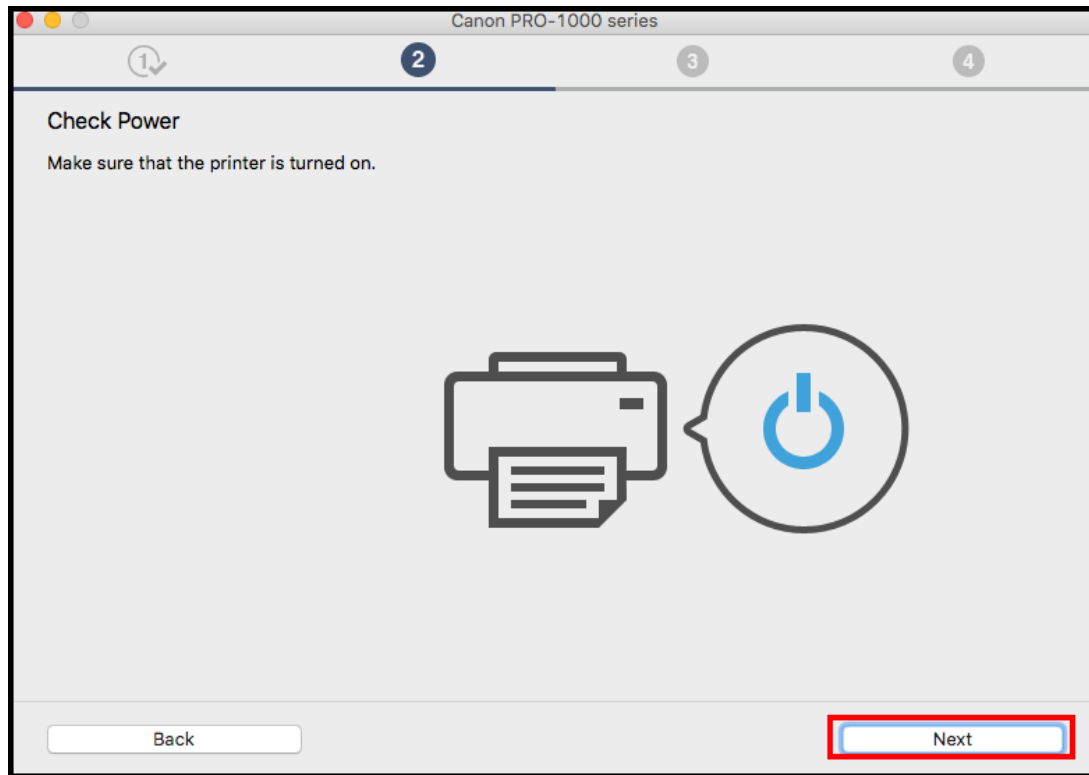
Connecting to the Wireless LAN

Select **Connect via wireless router (recommended)** then click **Next**.



Connecting to the Wireless LAN

Click **Next** on the **Check Power** screen.



Adding the Printer

On the **Select Printer** screen verify your printer is selected by checking the listing in the **Serial Number(Last 5 Digits)** column. This will show the last 5 digits of the printer's serial number. The serial number is found on a sticker on the back of the printer near the bottom right. Click **Next**.

Canon PRO-1000 series

1 2 3 4

Select Printer

Select from the list

The serial number can be found on the Letter of Guarantee and on the printer.

IPv4 Device IPv6 Device

Serial Number (Last 5 Digits)	IP Address	MAC Address
<input checked="" type="checkbox"/> **** X1234	192.168.1.101	11:22:33:44:55:66

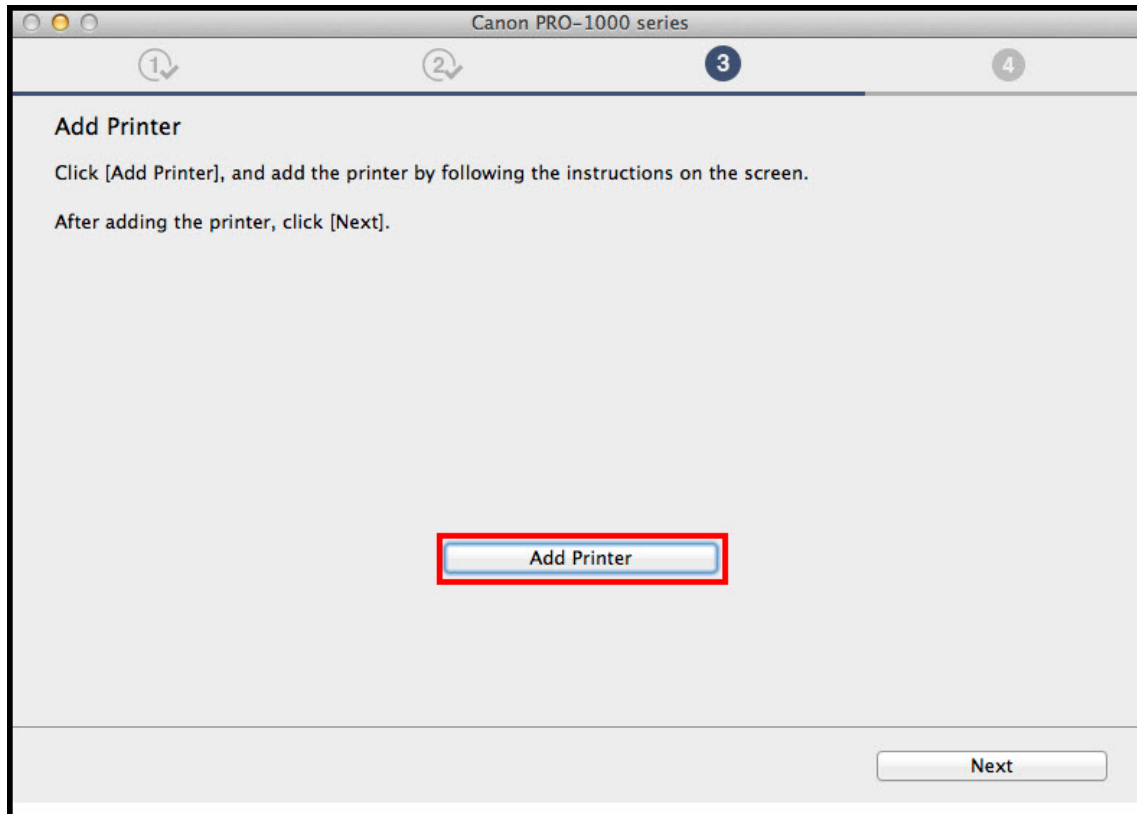
Specify the IP address and run the search

Set up the network connection according to the guide

Select this option if the printer is not displayed on the list or if it cannot be found by specifying the IP address.

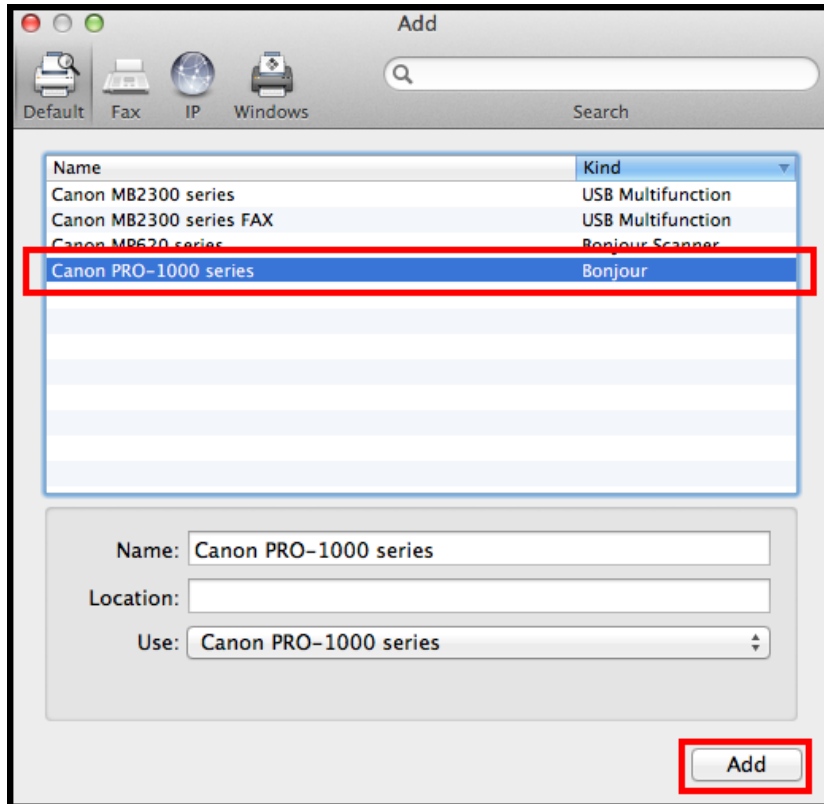
Adding the Printer

On the **Add Printer** screen click **Add Printer**.



Adding the Printer

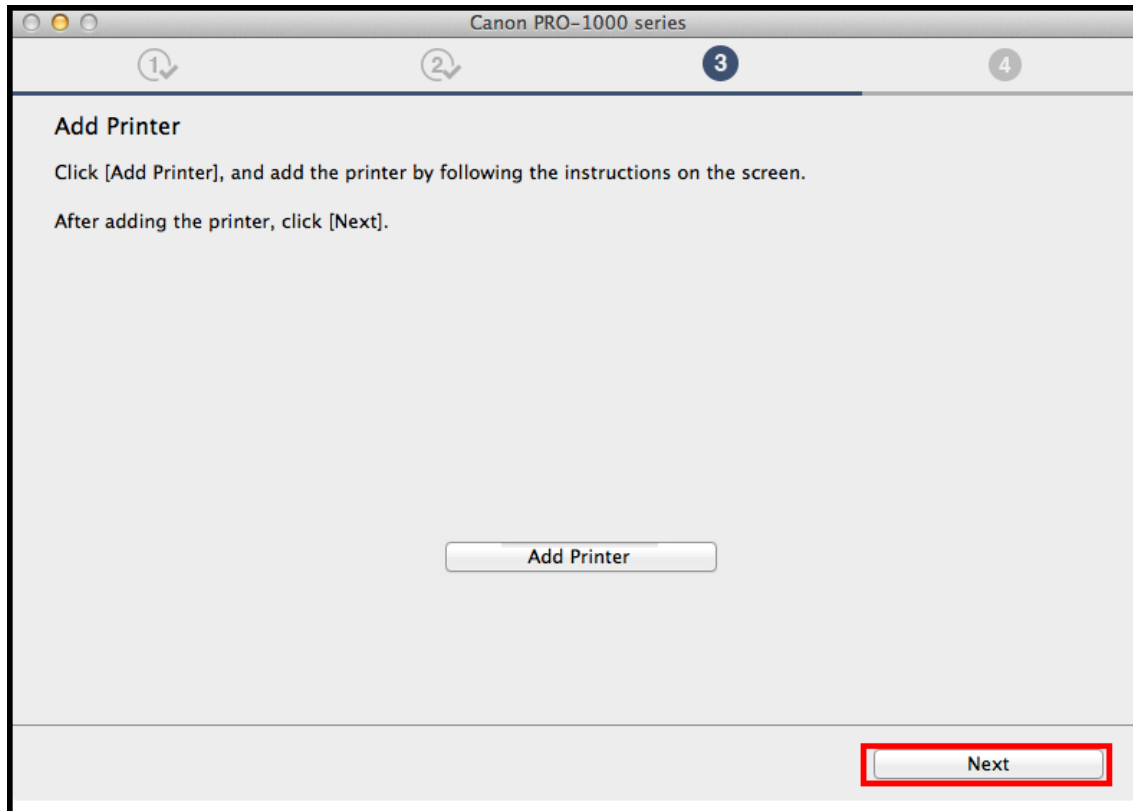
On the **Add** screen, select the **Canon PRO-1000 series** with **Bonjour** listed in the **Kind** column. Click ***Add**.



***Note:** If something other than **Canon PRO-1000 series** is selected for **Use** , click the dropdown arrow and select **Canon PRO-1000 series** before clicking **Add**

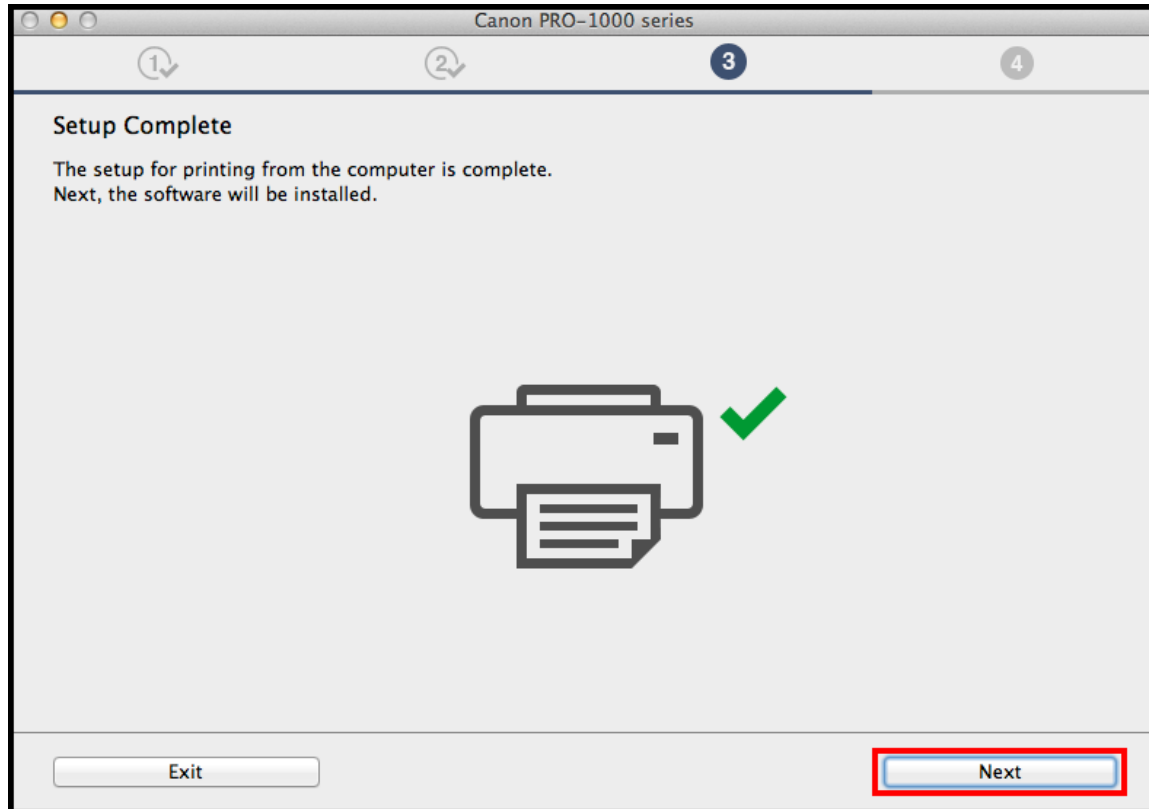
Adding the Printer

Click **Next** on the **Add Printer** screen.



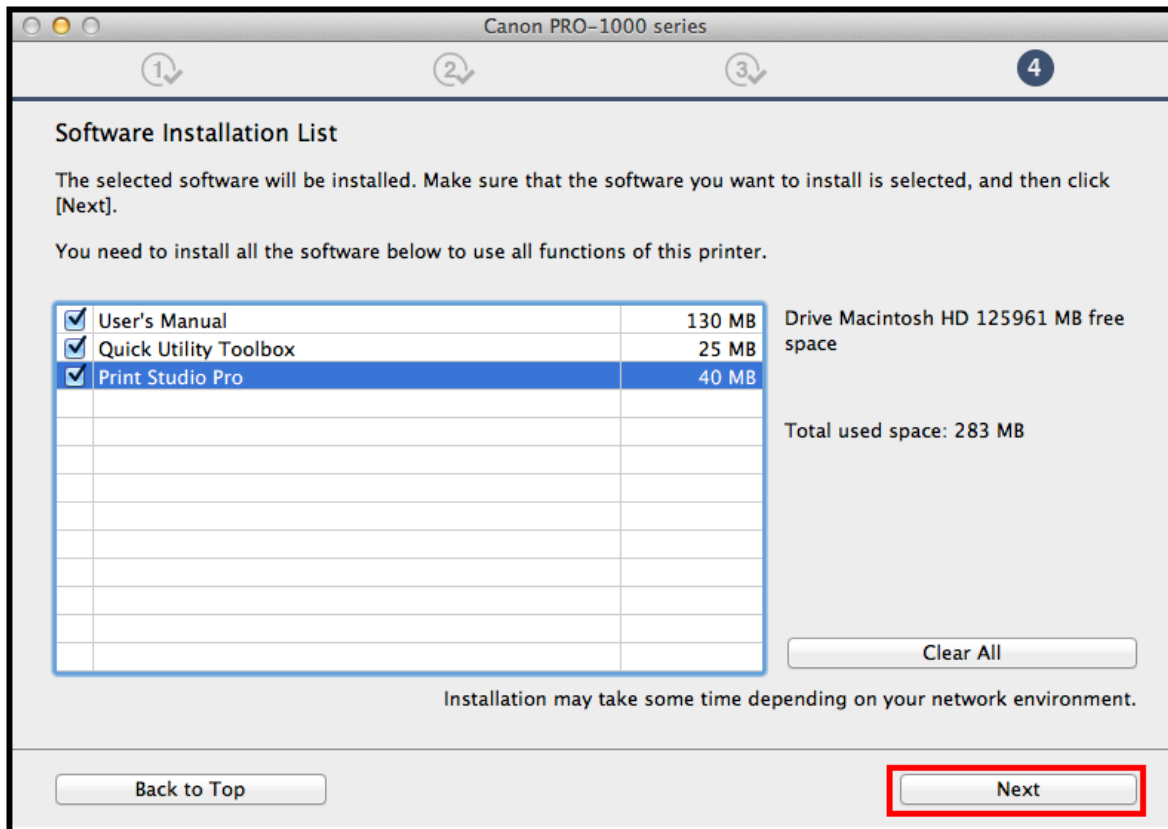
Adding the Printer

Continue to follow on-screen instructions. Click **Next** on the **Setup Complete** screen.



Installing the Drivers & Software

Continue to follow the on-screen instructions. On the **Software Installation List**, select any of the optional software to install and click **Next**.



Installing the Drivers & Software

At this point the connection has been established and Drivers and Software has been installed. Please follow any remaining instructions to finish and exit the setup. Click **Exit** when the **Installation completed successfully** screen appears.

