



Install the Software & Drivers

Completing the Setup

Windows

If the printer is already connected to the Wireless Network, it is only necessary to install the drivers and optional software to use the printer for printing and scanning over the Wireless Network. Follow the instructions below.

Insert the Setup CD-ROM into your computer.*

Click [Run Msetup4.exe] on the AutoPlay screen, then click [Yes] or [Continue] on the User Account Control dialog box.

If the CD-ROM does not autorun:

Double-click [(My) Computer] > CDROM icon > [MSETUP4.EXE.]



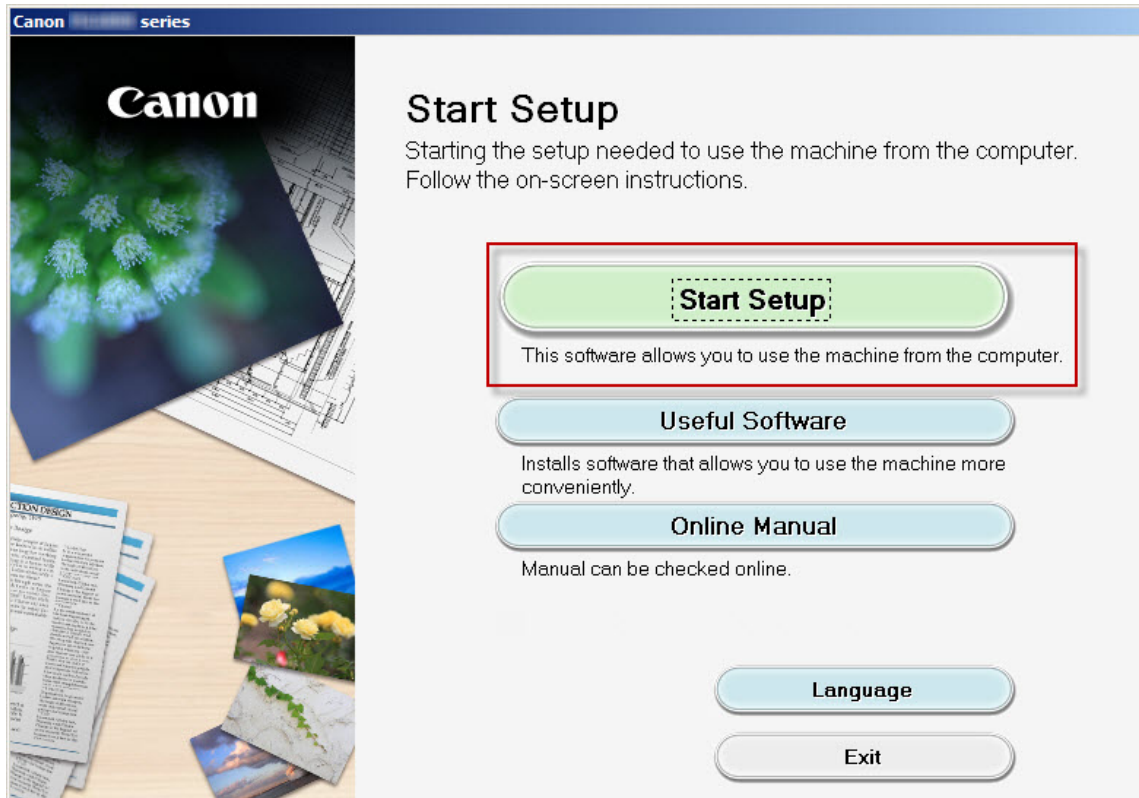
*If you don't have or cannot use the Setup CD-ROM, follow the steps below to start the setup.

- Download the software (click the appropriate link to download): [MG6820](#) [MG7720](#)
- Double-click the downloaded .exe file

If the **User Account Control** dialog box appears during the setup, click **Yes** or **Continue**.

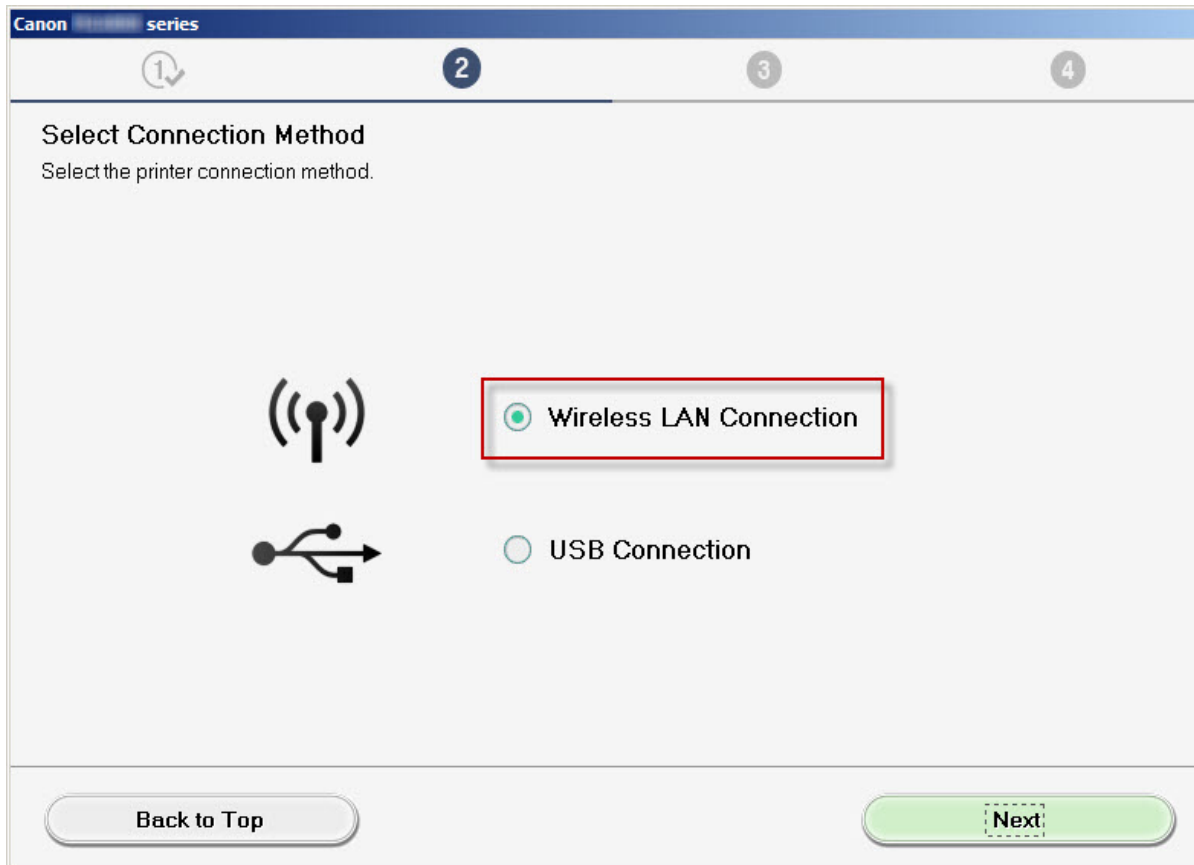
Start Software Setup

Click **Start Setup** on the initial screen.



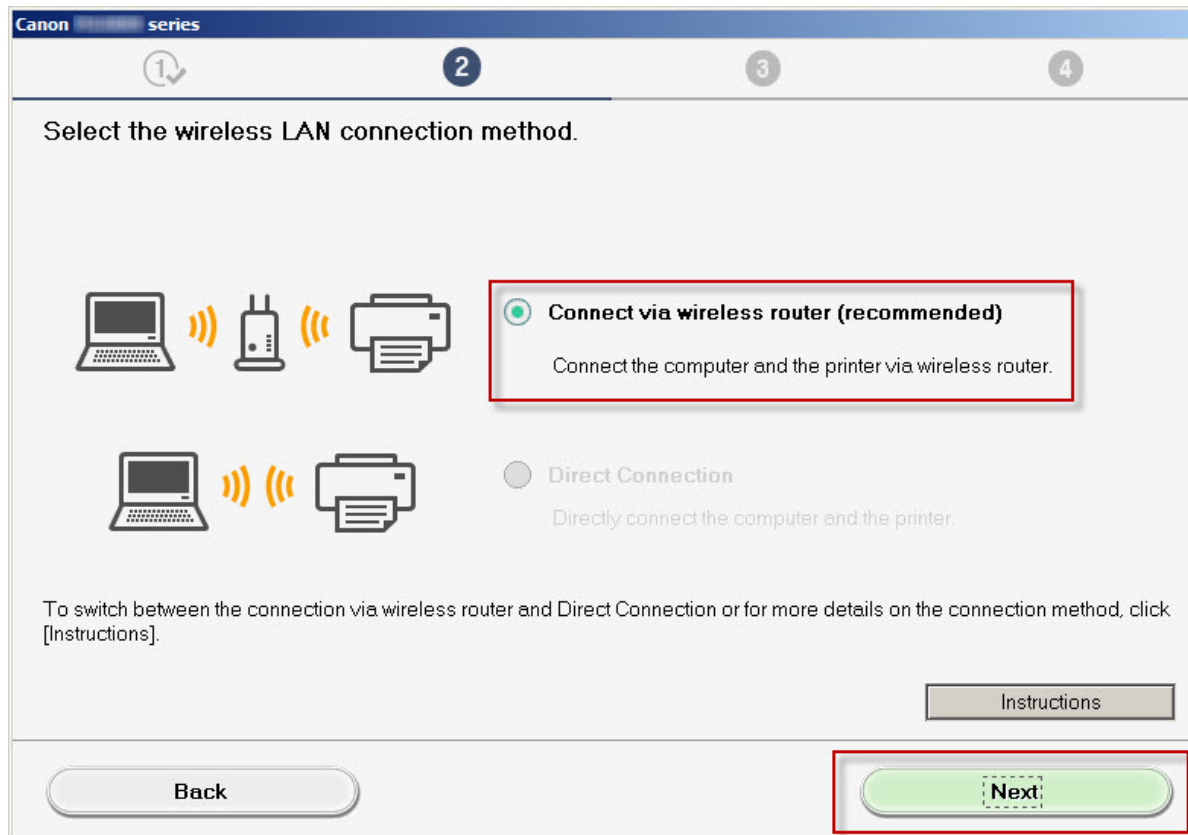
Connection Method

Continue following on-screen instructions to select country, License Agreement, etc. until the **Select Connection Method** screen appears. Be sure to select **Wireless LAN Connection**, then click **Next**..

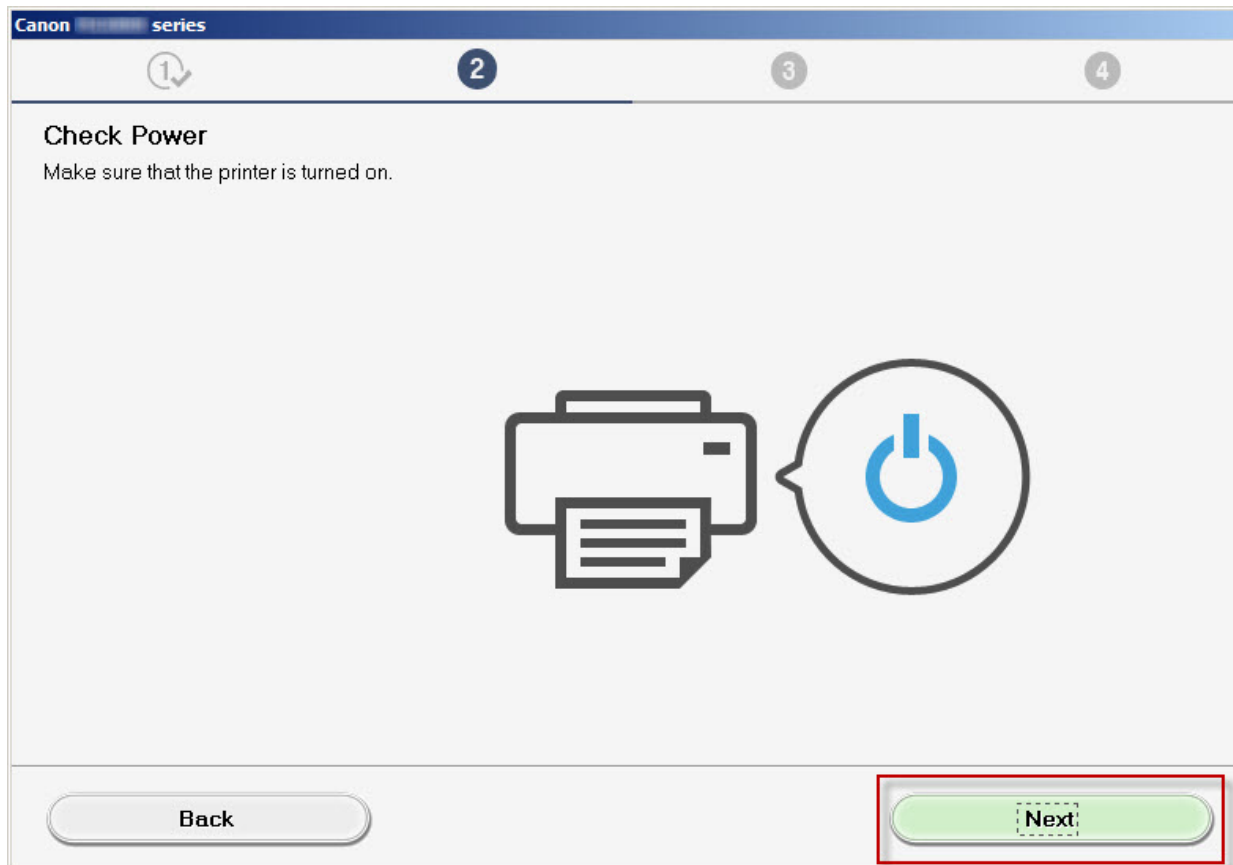


Connection Method

Select **Connect via wireless router (recommended)** then click **Next**.



Click **Next** on the **Check Power** screen.



On the **Printers on Network List** verify your printer is selected by checking the listing in the **Serial Number** column. This will show the last 5 digits of the printer's serial number. The serial number is found on a sticker on the back of the printer near the bottom. Click **Next**.

Canon series

1 2 3 4

Printers on Network List

| | Serial Number | MAC Address | IP Address |
|-------------------------------------|---------------|-------------------|---------------|
| <input checked="" type="checkbox"/> | *****2345 | 99:88:77:66:55:44 | 192.168.1.123 |
| <input type="checkbox"/> | | | |
| <input type="checkbox"/> | | | |
| <input type="checkbox"/> | | | |

Update

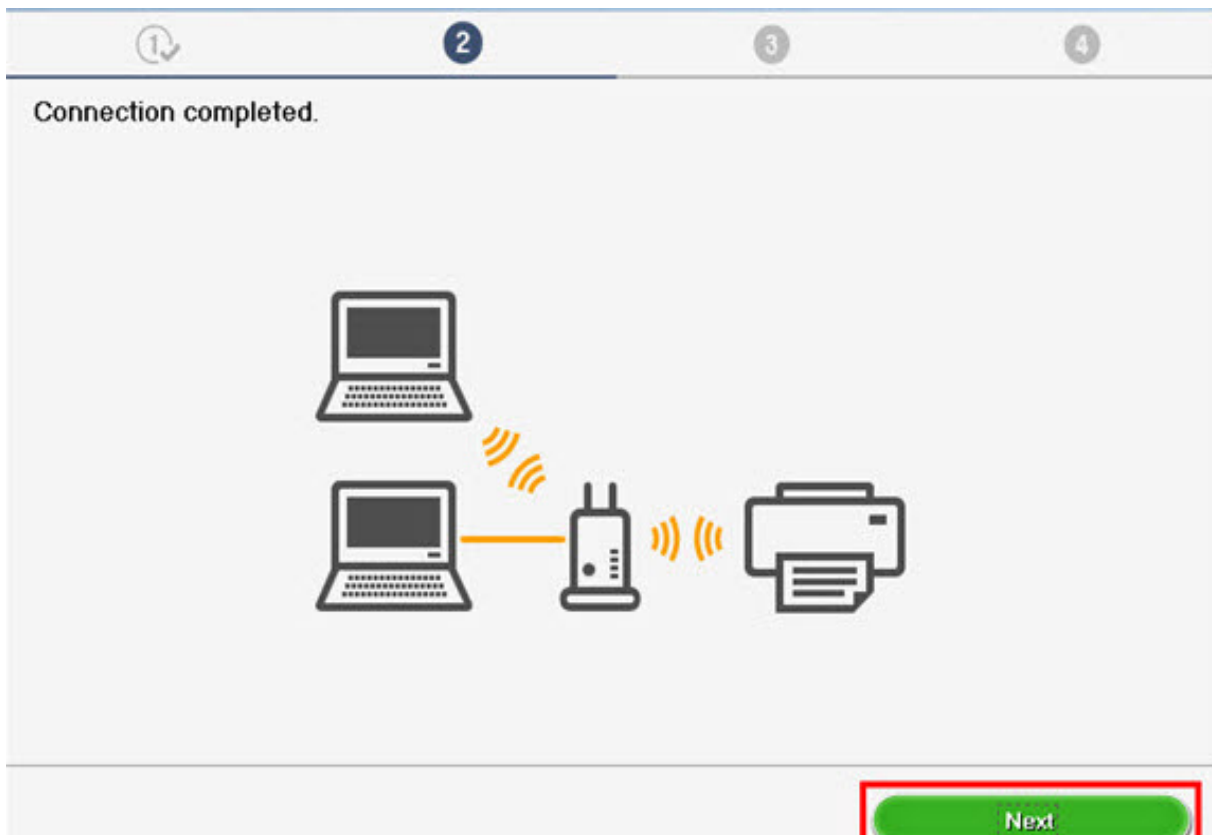
Setting printer could not be found on the list

1. To set a printer on the network, select one from the above printers list, and then click [Next].
The serial number can be found on the back of the printer and on the Letter of Guarantee.
The above list displays only the last 5 digits of the serial number.
2. If the setting printer could not be found on the above list, turn on the printer and click [Update].
3. If the printer could not still be found, select [Setting printer could not be found on the list], and then click [Next].

Back to Top

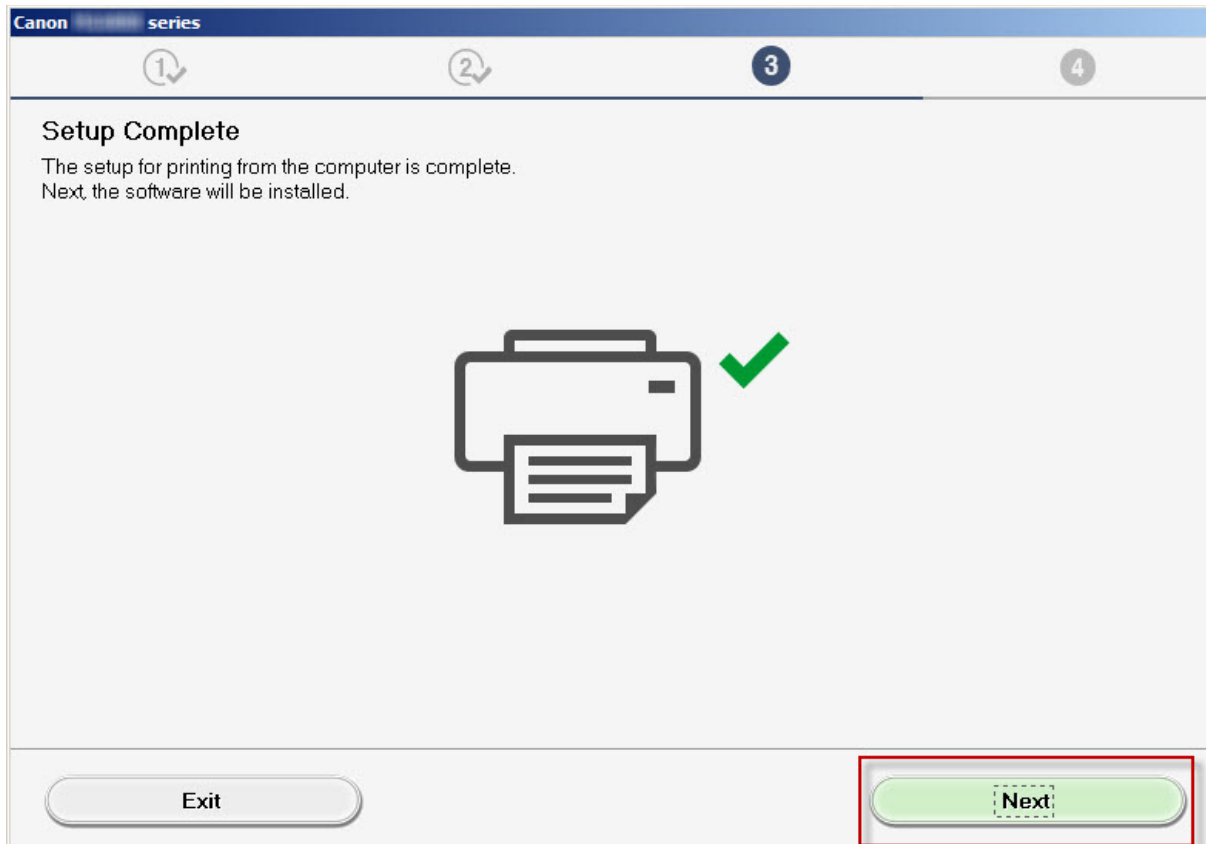
Next

Click **Next** on the **Connection Completed** screen.



Install the Drivers & Software

Continue to follow on-screen instructions. Click **Next** on the **Setup Complete** screen.



Install the Drivers & Software

Continue to follow the on-screen instructions. On the **Software Installation List**, select any of the optional software to install and click **Next**.

Canon series

1 2 3 4

Software Installation List

The selected software will be installed. Make sure that the software you want to install is selected, and then click [Next].

| | | |
|--|--------|---|
| <input checked="" type="checkbox"/> User's Manual | 10 MB | Drive C: 170784 MB free space Total used space: 879 MB |
| <input checked="" type="checkbox"/> My Printer | 14 MB | |
| <input checked="" type="checkbox"/> My Image Garden | 705 MB | |
| <input checked="" type="checkbox"/> Quick Menu | 40 MB | |
| <input checked="" type="checkbox"/> Easy-WebPrint EX | 110 MB | |
| <input type="checkbox"/> XPS Driver | 130 MB | |

Estimated installation time: 5 to 10 minutes
Installation may take some time depending on your network environment.

Clear All

Back to Top

Next

Exit Setup

At this point the connection has been established and Drivers and Software has been installed. Please follow any remaining instructions to finish and exit the setup. Click **Exit** when the **Installation completed successfully** screen appears.

